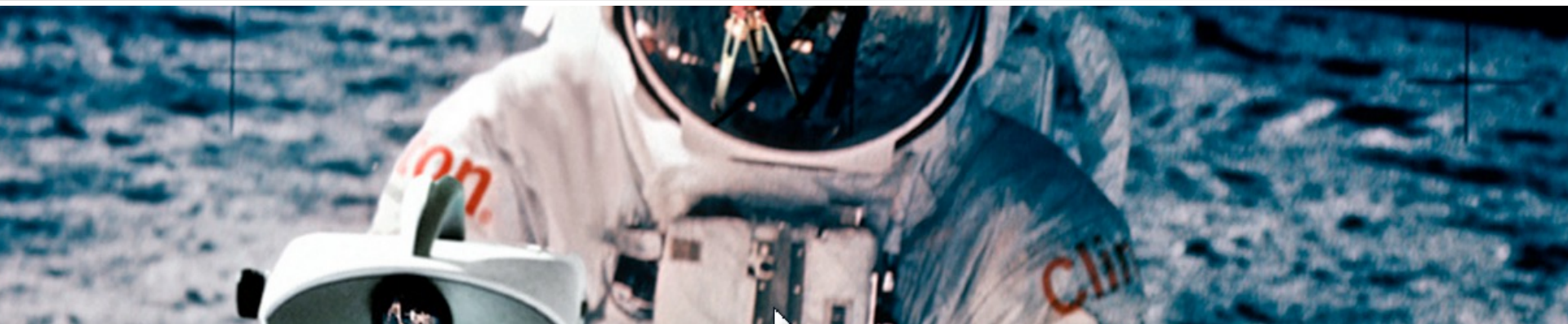
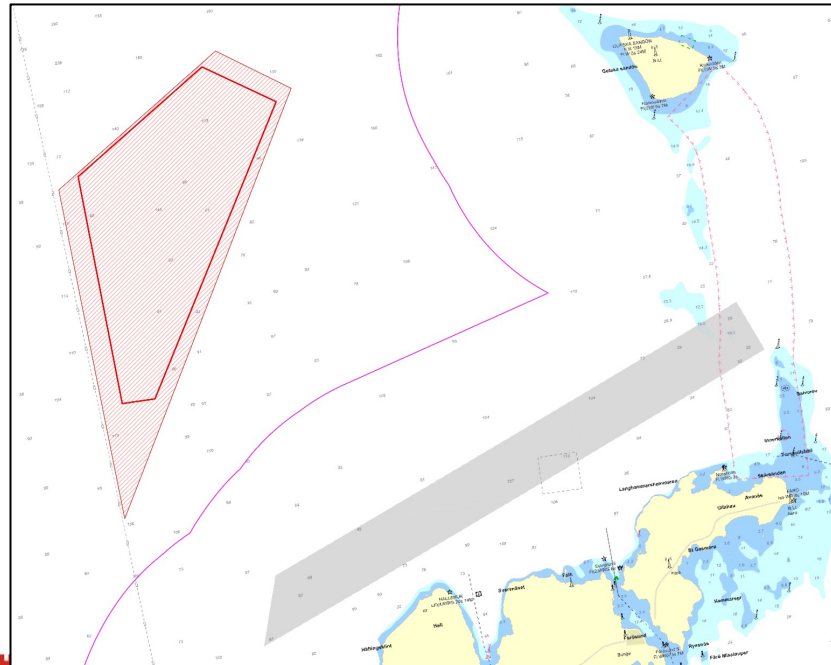
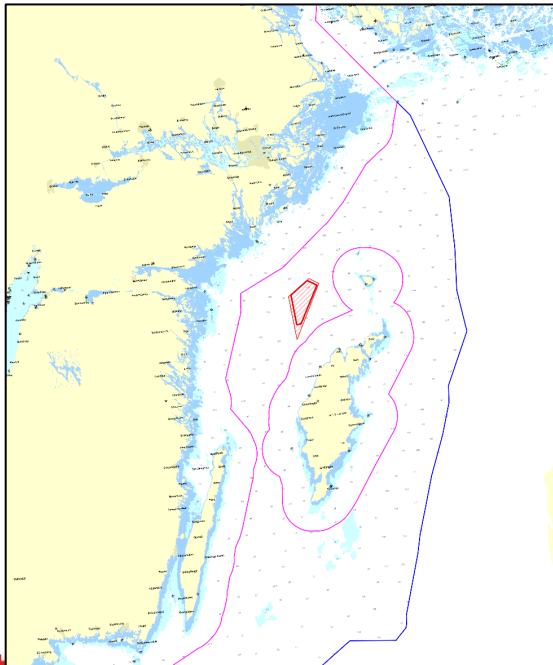


Notice to Mariners Geophysical survey, North of Gotland area Baltic Sea



- VESSEL:** M/V NORTHERN STORM
- MANEUVERABILITY:** LIMITED
- EQUIPMENT:** HULLMOUNTED & TOWED SYSTEMS
(TOWED SYSTEMS ARE TOWED CLOSE TO SEABED)
- TIME:** 21ST OF APRIL 2024 TO 15TH OF OCTOBER
(*ON AND OFF DURING THIS PERIOD, NOT CONTINUOUS OPERATION*)
- AIM:** GEOPHYSICAL CONDITIONS FOR A POTENTIAL WIND FARM



Red thick line
area is to be
surveyed

M/V Northern Storm

Calls sign: MISA7

Bridge: +46 31 30 11 132

Email: master-northernstorm@clinton.se

Contact person at Clinton Marine Survey:

Philip Ljungström	Project Manager	+46 708 79 90 26
Martin Wikmar	CEO	+46 708 79 90 20

